

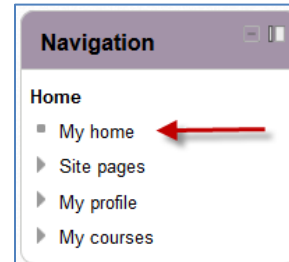
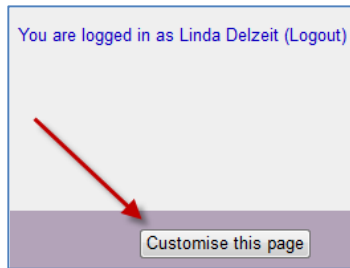
Moodle 2.4 Tip – Configure “My Home”

One of the newest features of Moodle 2.4 you may want to use is the ability to configure “MY HOME” page under the Moodle Navigation Block. This allows you the ability to display more or less courses than you have under the “MY COURSES” list.

Step 1: Log into Moodle [<https://moodle.lattc.edu>]

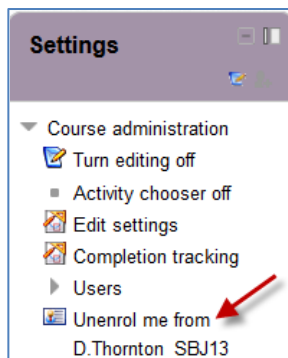
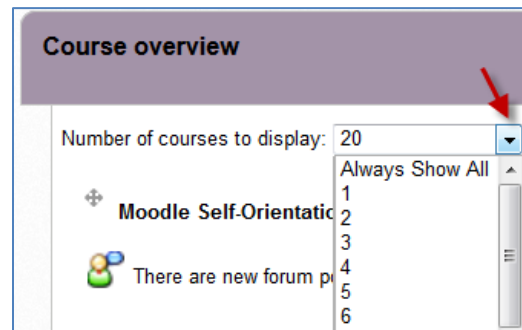
Step 2: Go to the Navigation block and click on My Home

Step 3: Click on the **Customize this Page** button in top right.



Step 4: Click on the drop down menu next to Number of Courses to Display and select how many courses you want to display on your page.

Step 5: If you find courses you no longer want to be displayed then go to that course and in the settings menu, select **Unenrol me from** and then be sure to confirm you want to me unenrolled from the course.



Step 6: If you want to reorder your courses, click and hold the + symbol next to the course and drag it to the new location.

