

Visitor Wireless Login

1.- First go to the **Control Panel**.

a.- For Windows 8 Users:

Move the mouse to the charms menu and click on the settings and then click **Control Panel**.

b.- For Windows 7 Users:

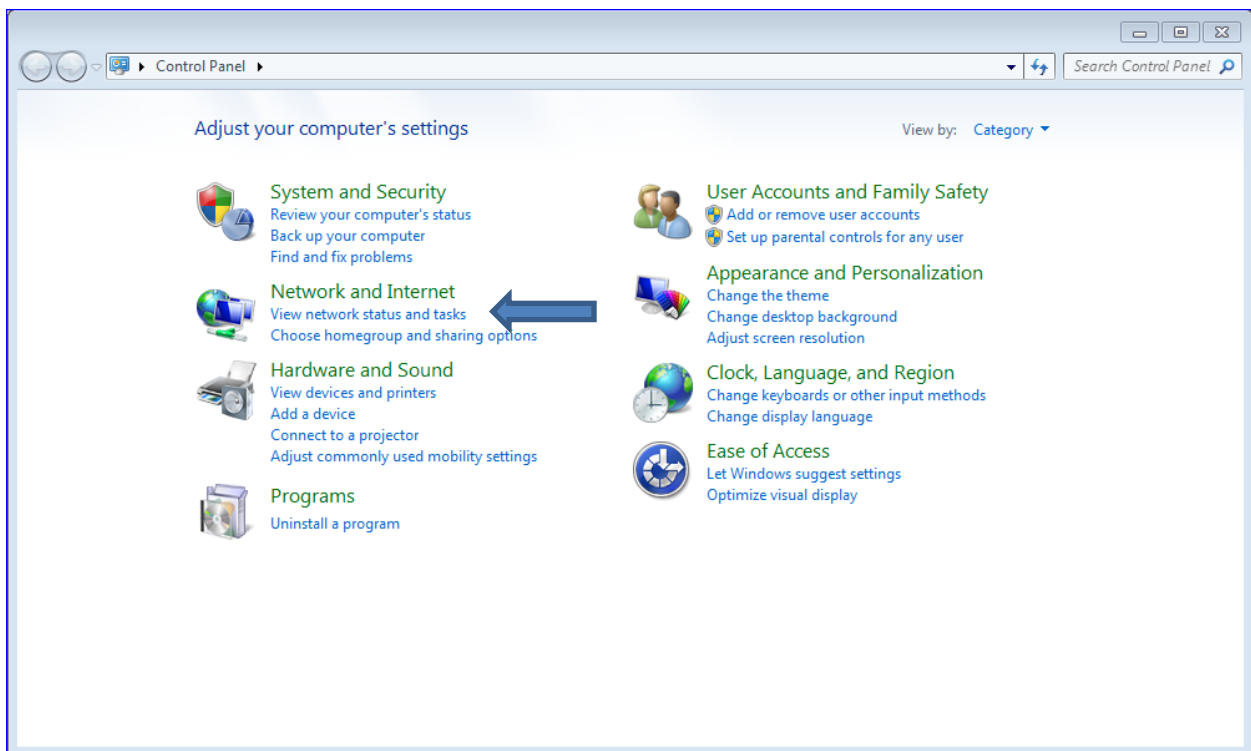
Click **Start** and Click **Control Panel**.

C.- For Windows 95, 98, ME, or XP Users:

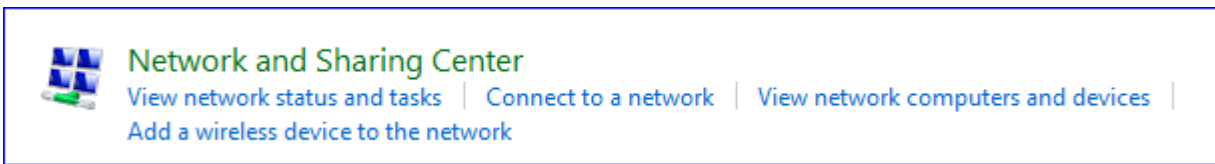
Click **Start**, click **Settings**, then click **Control Panel**.

D.- For a Mac Users If you don't know how to find your wireless settings please scroll down for instructions.

2.- Once on the Control Panel, Select **Network and Internet**.

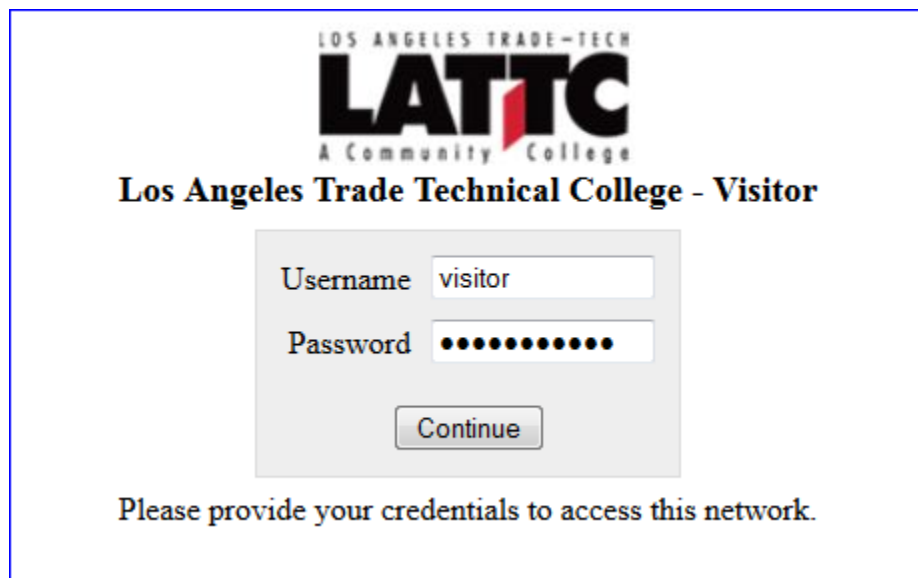


3.- Then on the **Network and Sharing Center** you will click on **Connect to a Network**.



4.- Once you click on Connect to a Network you will get a list of the available Networks. Please be sure to click on the **LATTC- Visitor Network**.

5.- The next step is to open up a browser, (Firefox, Chrome, Internet Explorer, Safari, etc.). after you open up the browser a window should pop up for your credentials.

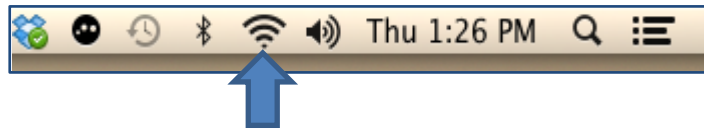
A screenshot of a login page for Los Angeles Trade Technical College. At the top, it says "LOS ANGELES TRADE-TECH" in small letters, followed by the large "LATTC" logo and "A Community College" below it. The main heading is "Los Angeles Trade Technical College - Visitor". Below this is a light gray box containing a login form. The form has two fields: "Username" with the text "visitor" and "Password" with ten black dots. A "Continue" button is positioned below the password field. At the bottom of the page, it says "Please provide your credentials to access this network."

Username: Visitor
Password: latradetech

6.- At the bottom of the screen you will find an **Accept Button** that you need to click to accept the agreement about using this wireless network and you are Done!

Instructions on how to connect to get to the wireless settings For Mac Users:

Go to the top right corner on your computer screen and you will find a bar where you can see the time and other icons. One of these icons is the wireless for your computer.



When you click on the icon you will get a menu with a list of wireless networks within range.



Select the One you have access to and follow steps 5 to 6 above.