

Student Wireless Login

1.- First go to the **Control Panel**.

a.- For Windows 8 Users:

Move the mouse to the charms menu and click on the settings and then click **Control Panel**.

b.- For Windows 7 Users:

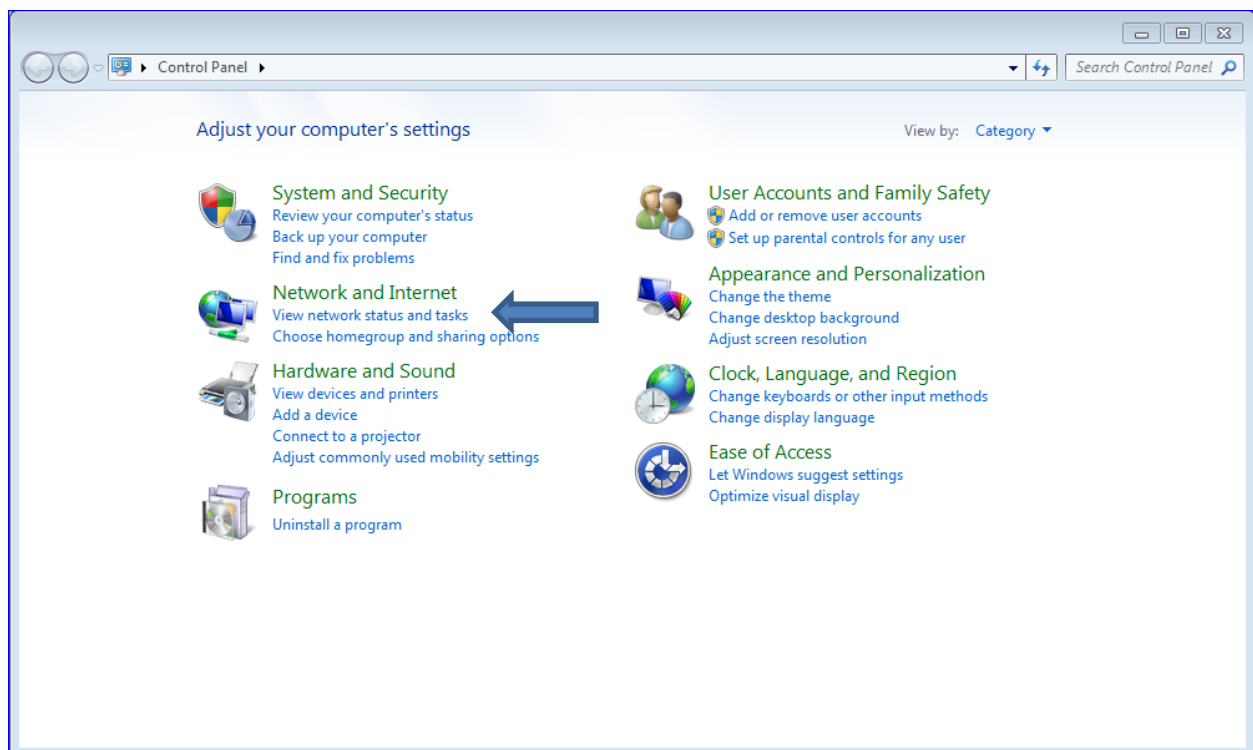
Click **Start** and Click **Control Panel**.

c.- For Windows 95, 98, ME, or XP Users:

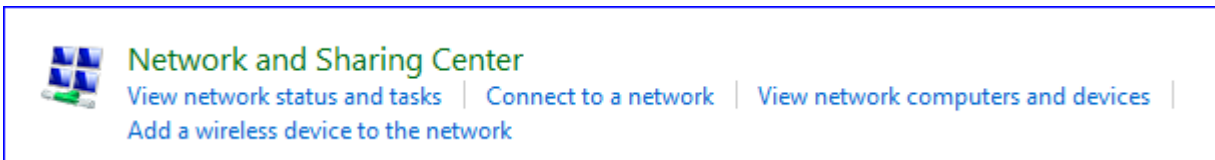
Click **Start**, click **Settings**, then click **Control Panel**.

d.- For a Mac Users If you don't know how to find your wireless settings please scroll down for instructions.

2.- Once on the Control Panel, Select **Network and Internet**.

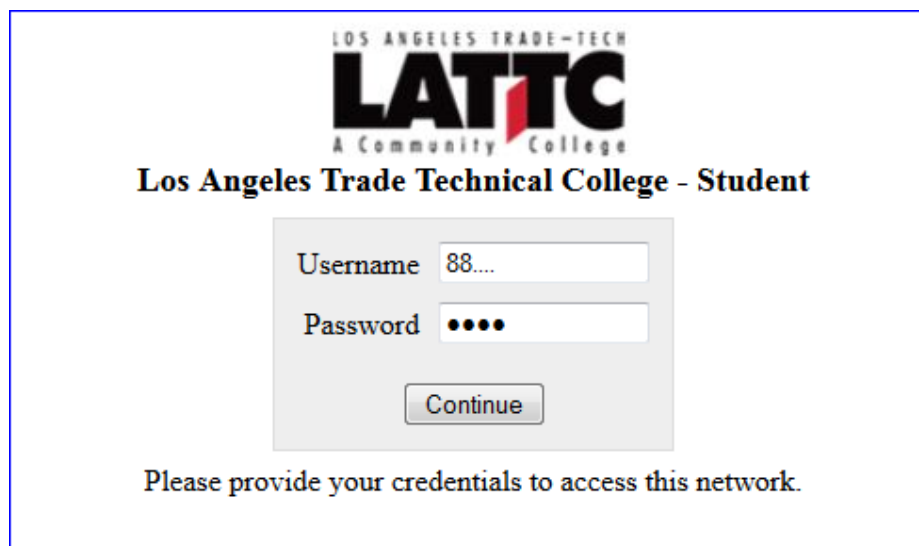


3.- Then on the **Network and Sharing Center** you will click on **Connect to a Network**.



4.- Once you click on Connect to a Network you will get a list of the available Networks. Please be sure to click on the **LATTC- Student Network**.

5.- The next step is to open up a browser, (Firefox, Chrome, Internet Explorer, Safari, etc.). after you open up the browser a window should pop up for your credentials.

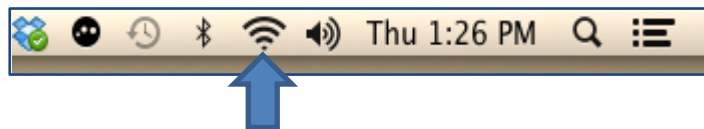
A screenshot of the LATTC Student login page. At the top, it says "LOS ANGELES TRADE-TECH" above the "LATTC" logo, which is "A Community College". Below the logo, it says "Los Angeles Trade Technical College - Student". There is a login form with two input fields: "Username" with the text "88..." and "Password" with four dots. Below the fields is a "Continue" button. At the bottom of the form, it says "Please provide your credentials to access this network."

Username: Student ID 88...
Password: MMDD
(Two digits for the Month and Two digits for the Day of Birthdate)

6.- At the bottom of the screen you will find an **Accept Button** that you need to click to accept the agreement about using this wireless network and you are Done!

Instructions on how to connect to get to the wireless settings For Mac Users:

Go to the top right corner on your computer screen and you will find a bar where you can see the time and other icons. One of these icons is the wireless for your computer.



When you click on the icon you will get a menu with a list of wireless networks within range.



Select the One you have access to and follow steps 5 to 6 above.